




Warnings

- Veinlite EMS PRO is designed for external examination only.
- To avoid contamination of the device, Veinlite EMS PRO must be used with the disposable plastic cover.
- To avoid the spread of infection, always change the disposable plastic cover between patients and wipe the new cover with a germicidal wipe.
- These devices are intended for use only by clinicians trained in performing vascular access, or under the supervision of a clinician.
- Do not look directly into the LEDs while on.

Warranty Information

The Veinlite EMS PRO has a one year parts and labor warranty. Please provide the serial number located under the battery or the outside of the box when you contact TransLite LLC for any warranty issues. The warranty is valid only if the Veinlite EMS PRO is used according to the manufacturer's instructions. Before returning the Veinlite EMS PRO to TransLite for repair, you must call or e-mail TransLite to obtain a return authorization code and shipping information before sending your device. No refunds will be given for unauthorized shipping.

Explanation of Symbols

SYMBOL	EXPLANATION
REF	Model Number
SN	Serial Number
	Manufacturer
	EC Representative (EU Only)
	Do not dispose as unsorted municipal waste.

EC	REP
-----------	------------

Healthcare & Education Centre
The Church, Portland Street
Southport, PR81HU, UK
Tel: +44 1704 544 944
Fax: +44 1704 544 050

This product is covered by Patents.
Patent Numbers: 7,874,698;
7,841,751; 8,032,205; 8,177,808

VEMS PRO DFU Rev 3 1016



Manufacturer
TransLite LLC
8410 Highway 90A, Suite 150
Sugar Land, TX 77478 USA

Tel: (281) 240 3111
Fax: (281) 240 3122
www.veinlite.com
info@veinlite.com



Veinlite EMS PRO® CE

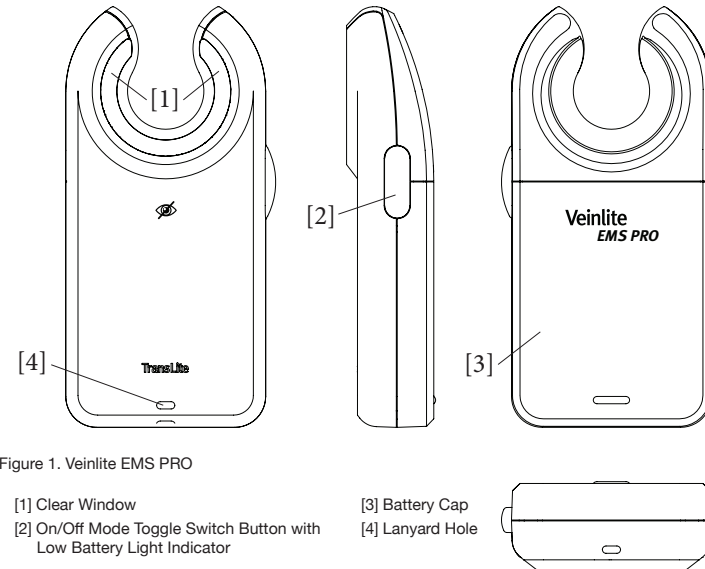


Figure 1. Veinlite EMS PRO

- [1] Clear Window
[2] On/Off Mode Toggle Switch Button with Low Battery Light Indicator
[3] Battery Cap
[4] Lanyard Hole

DIRECTIONS FOR USE

Description

The TransLite Veinlite EMS PRO® is a hand-held battery powered illumination device for finding veins and assisting in vein access. It has two modes of operation: surface illumination using 8 bright white LEDs and side-transillumination using 12 orange plus 4 red LEDs. Side-transillumination is a patented* technique which enables the Veinlite EMS PRO to uniformly illuminate a small region of skin and subcutaneous tissue, anywhere on the body, without any areas of shadow. The side-transillumination technique allows better visualization of veins than any other transillumination method. The design of the Veinlite EMS PRO is such that during vein access, the vein is visualized, skin is stretched and the vein is secured to keep it from rolling.

Intended Use/Indications

- Examining the skin surface, finding veins and assisting in vein access in all patient populations
- Venous access in patients with a history of difficult venous access or fragile veins
- Easier visualization of veins in dark skinned patients

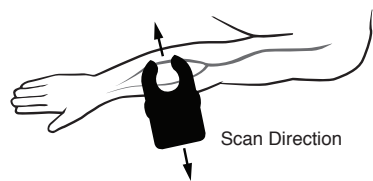
Contraindications

- When used for internal examination
- When used without the disposable plastic cover

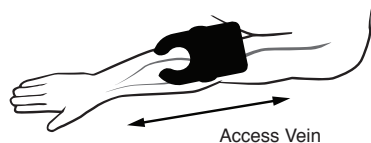
Operation

- Place the Veinlite EMS PRO against the patient's skin with the LED side in direct contact with the skin perpendicular to vein direction. Apply gentle pressure to maintain optimal skin contact.
- To turn on the LEDs, press the opaque button located on the left side of the device.
- Press the button a second time to switch on the white LEDs for surface illumination.
- Press the button a third time to turn off.

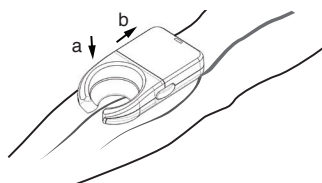
WARNING: DO NOT SHINE THE LED LIGHTS IN THE PATIENT'S EYES.



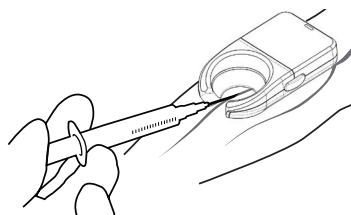
- 1 To scan for veins, place device against skin *perpendicular to vein direction*. Scan it forward and backward. Veins will be visible as dark lines due to transillumination.



- 2 Once a suitable vein has been identified, rotate device 90°, parallel to vein.



- 3a Apply gentle pressure on the Veinlite EMS PRO to secure the vein.
- 3b Push back slightly on the Veinlite EMS PRO to stretch the skin and provide traction.



- 4 Insert the needle into the vein, through the opening of the device.

NOTE: Discard the single-use disposable plastic cover after each patient.

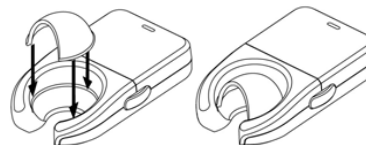
Attachments

Two patented*** attachments are included with the Veinlite EMS PRO:

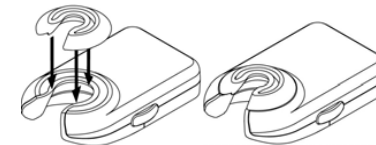
- A. A snap-on light shield to reduce interference from bright overhead lighting.
- B. A snap-on pediatric adapter to reduce the size of the viewing area for use with infants.

The diagrams below indicate how to attach the light shield and neonatal adapter.

A. Veinlite EMS PRO Light Shield



B. Veinlite EMS PRO Pediatric Adapter



Using the Disposable Plastic Cover

The single-use disposable plastic covers (Product #VEMS-DPC) for the Veinlite EMS PRO MUST be used when the device is placed in contact with a patient's skin.

CAUTION: These plastic covers are not sterile. They should be wiped with a germicidal wipe prior to use.

- Before using Veinlite EMS PRO, place it inside the disposable cover with the flap on the same side as the LEDs.
- Pull the flap over the device to the other side.
- Wipe the LED side of the Veinlite EMS PRO and any part of it coming in contact with the patient, with a medically approved germicidal wipe.

Precautions

- Avoid using alcohol on the clear plastic window as this may cause fogging.
- Do not immerse the device in liquid.
- Do not autoclave the device.

Multi-Color Low Battery Indicator

The Veinlite EMS PRO is powered by two AA alkaline batteries. The batteries will provide between 3 and 5 hours of continuous use depending on the setting and type of battery used. When the batteries run low, the green light under the button [2] will be replaced by an orange low battery indicator light. Approximately one hour of battery use is left when the orange low battery indicator is replaced by a red blinking light.

Installing or Replacing Batteries

To install or replace the batteries, press firmly on the battery cap [3] and slide it off. Remove any used batteries. Install two new AA batteries, oriented as indicated by the markings inside the battery compartment then slide the battery cover back into place.

Attaching a Lanyard

A lanyard can be attached to the Veinlite EMS PRO, via the hole at the bottom of the unit [4]. Use a thin cord for this purpose.